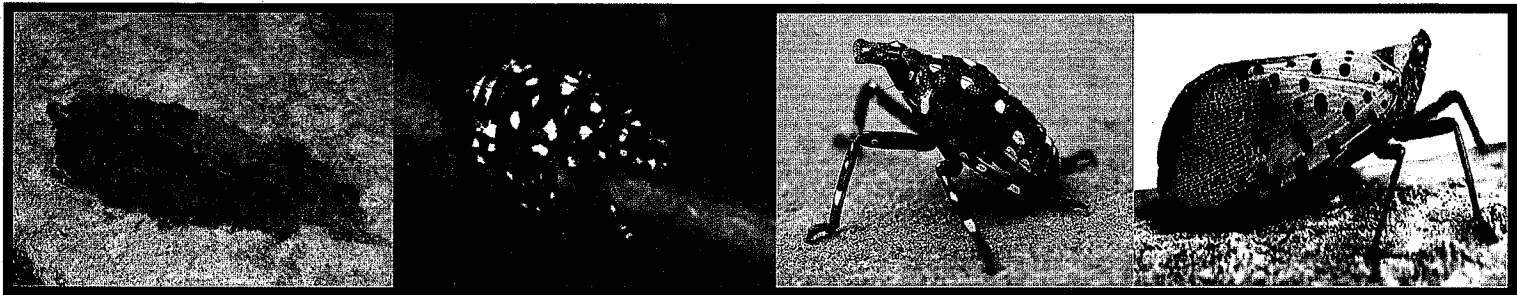


# SEE IT, REPORT IT!



## Spotted Lanternfly

### What to do:

If you see egg masses, scrape them off, double bag and throw away.  
You can also place the eggs into alcohol, bleach or hand sanitizer to kill them.

### Collect a specimen:

Specimens of any life stage can be turned in to the New Jersey Department of Agriculture's lab for verification.

### Take a picture:

With your GPS function turned on your smartphone or a camera with GPS, take a photograph of **ANY** life stage (including egg masses).

Submit picture to: [SLF-plantindustry@ag.nj.gov](mailto:SLF-plantindustry@ag.nj.gov)

### Report a site:

If you can't take a specimen or photograph, call and leave a message detailing the sighting location/address and your contact information.

## NJ Spotted Lanternfly Hotline at 1-833-223-2840 (BADBUG0)





Examples listed below are some of the available insecticide products containing the most effective ingredients studied (*dinotefuran, imidacloprid, carbaryl, and bifenthrin*).

**EXAMPLES OF PRODUCTS CONTAINING INSECTICIDES LABELED FOR USE IN LANDSCAPES AND GARDENS:**

**Contact insecticides (bifenthrin, carbaryl) - apply when adult insects are present:**

AVALON INSECTICIDE  
BIFEN 7.9F SELECT  
FERTI-LOME BROAD SPECTRUM INSECTICIDE  
FLEE READY-TO-USE YARD SPRAY  
HOME MD MAXIMUM DEFENSE YARD CONCENTRATE  
LESCO CROSSCHECK PLUS MULTI INSECTICIDE  
MAXXTHOR SG  
ORTHO MAX PRO  
SEVIN  
TALSTAR SELECT INSECTICIDE  
UP-STAR GOLD INSECTICIDE

**Systemic insecticides (imidacloprid, dinotefuran) – most effective when applied in spring and summer, before adults build up:**

BAYER ADVANCED 12 MONTH TREE & SHRUB INSECT CONTROL  
BONIDE ANNUAL TREE AND SHRUB INSECT CONTROL WITH SYSTEMAXX  
COMPARE-N-SAVE SYSTEMIC TREE & SHRUB INSECT DRENCH  
GREEN LIGHT TREE & SHRUB INSECT CONTROL WITH SAFARI  
MONTEREY ONCE A YEAR INSECT CONTROL II  
ORTHO BUG B GON YEAR-LONG TREE & SHRUB INSECT CONTROL CONCENTRATE  
SPECTRACIDE TREE & SHRUB INSECT CONTROL  
TRANSTECT 70 WSP INSECTICIDE  
VENOM INSECTICIDE  
ZYLAM LIQUID SYSTEMIC INSECTICIDE

**EXAMPLES OF PRODUCTS CONTAINING INSECTICIDES FOR USE ON VEGETABLES, FRUIT, BERRIES AND GRAPES:**

*WHEN USING INSECTICIDES ON EDIBLE CROPS: It is especially important to follow directions for chemical application and timing from harvest as stated on the label.*

AGWAY COMPLETE FRUIT TREE SPRAY  
BONIDE COMPLETE FRUIT TREE SPRAY LIQUID  
BONIDE EIGHT INSECT CONTROL FLOWER & VEGETABLE ABOVE AND BELOW SOIL INSECT GRANULES  
HI-YIELD VEGETABLE & ORNAMENTAL INSECT CONTROL GRANULES  
SEVIN  
VEGETABLE GARDEN SOIL INSECTICIDE

---

The products listed above are registered for use in specific settings. Read the pesticide label and follow the directions, including application rates, methods, and appropriate protective clothing and equipment.

THE LIST IS PROVIDED BASED ON CURRENT PRODUCT REGISTRATIONS. THIS IS NOT AN ENDORSEMENT OF ANY PRODUCT OR PESTICIDE PRODUCER. THIS IS NOT A COMPLETE LIST OF POSSIBLE LABELED PRODUCTS OR BRANDS.

**THESE INSECTICIDES HAVE NOT ALL BEEN TESTED AGAINST SPOTTED LANTERNFLY SPECIFICALLY, AND ADDITIONAL EXPERIMENTS ARE NEEDED TO DETERMINE THEIR EFFICACY.**

September 2017